

# pdf file'09 // The Old Police Station



information for hiring  
for exhibitions and events

// images

// sizes

// rates

// location

>>pdf update Feb '10

[www.theoldpolicestation.org](http://www.theoldpolicestation.org)  
[studios@tempcontemp.co.uk](mailto:studios@tempcontemp.co.uk)

The Old Police Station  
114 Amersham Vale, London SE14 6LG

# // Introduction:



The Old Police Station is an exciting new location in London, combining gallery spaces, multiple independent project spaces, artist's studios, a radio station and tea rooms together with social events areas. On the same street as New Cross Station, this monolithic 1912 facility becomes a 'do-it-yourself Art Centre', an architectural infrastructure devised by Anthony Gross of temporarycontemporary that is conceived as an experimental curatorial model addressing social models, a specific economic climate and local momentum.

With a network of over 40 artist studios ranging from 100-600 sqft, exhibition spaces in the old gym, interview rooms and prison cells, The Old Police Station revolves around a central social hub, the Metropolitan Tea Rooms, Radio Station and large Edwardian Interview Room. These spaces together with the outside Operations Yard make for an environment that is generating a series of unique events and programmes, ranging from experimental sound works and outdoor screenings, supper clubs, solo shows by established artists, to community directed projects.

# The Old Gym// Gallery space for hire



Neil Rumming PV April '09

The Old Police Gym is an ideal gallery space with good natural light and large open rubber floor 4.39m w x 11.56m l x 3.37m h with a 2.13m x 2.77m space attached for storage or further exhibition. It has been renovated to include a long gallery wall and can be blacked out, has neon strip and halogen spots, it's own entrance via the yard and on-site parking.

# // The Prison Cells



Dirty Cop Friday, party  
last Friday of every month



4 atmospheric prison cells each 2.30 l x 1.8m w x 3.38m h  
for exhibition, photoshoots, supper club or private events.

# // The Interview Room



foreground: Ines Rebelo



The Edwardian Interview Room is 7.30m x 6m x 3.49m h with a large bay window, remnants of mahogany parquet floor and a store room to one side. Next to the bar it is an ideal party space or for use for live music, performance, banquet, photoshoot. Filled with light the Interview Room is full of character and highly workable be it for a single video installation or large group party. The room is kindly being renovated by young adults from the local Mulberry Centre.

Images: The Metropolitan Tea Rooms by day housing The Deptford Museum, and at night a private bar/social event

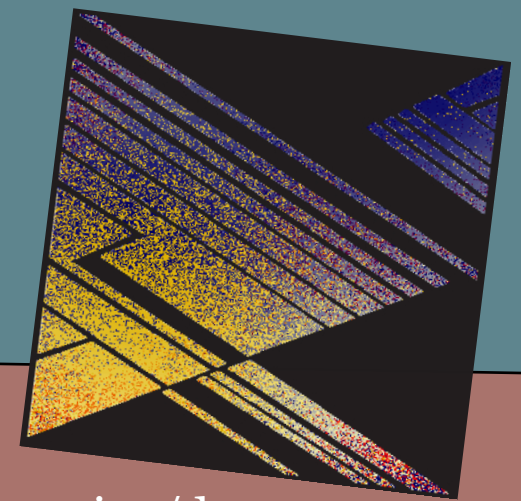
# // The Tea Rooms/Private Bar



The former fingerprint room/booking office, full of institutional details and herringbone floor, has been turned into a cafe by day and bar space at night for private views. Open Tues-Sat, 12-5pm, The Metropolitan Tea Rooms has been highly rated in Time Out, and serves home-cooked food by Jaine Laine. She provides catering for events and we have started a monthly themed Supper Clubs in the cells. Contact Jaine on 07794975089. Available for evening hire, 6-11pm, the space measuring 4.45m x 6.9m and 2.83m h works as a great bar or party space with sink, bar counter, double glass-fronted fridge and microwave. We also offer a bar service for your exhibition private view. Please enquire. All bar proceeds go back to helping the studio charity.

# // Rate Card

- enquire about our discounts  
for multiple bookings and repeat events.



## Artist Exhibition

	1 month hire	2 week	weekend	1x evening/day
Gallery (Old Gym)	£30/day	£45/day	£100/day	£200
Interview Room	£20/day	£35/day	£60/day	£200
Cells (not including cafe)	£30/day	£45/day	£60/day	£200
Interview Room + Cells	£45/day	£60/day	£100/day	£200
Cafe/bar	for day or evening events - price on application			

Equipment available to rent: 1x Projector £20/day, 3x DVD players, 2x 21" tvs, 2x small projection screens, 1x large rear projection screen, DJ equipment (£80/night): 100 w speakers, 8 channel mixer, 2x microphones and stands, 2x Denon cd decks, 2x Numark turntables+ mixer

The bar can be rented for Private Views for exhibitions.

The fee in full and a fully refundable deposit of £200 are required at the time of booking.

Catering is available for events.

The Bar is available for private evening events, from 6-11pm and private day time events Sat & Sun.

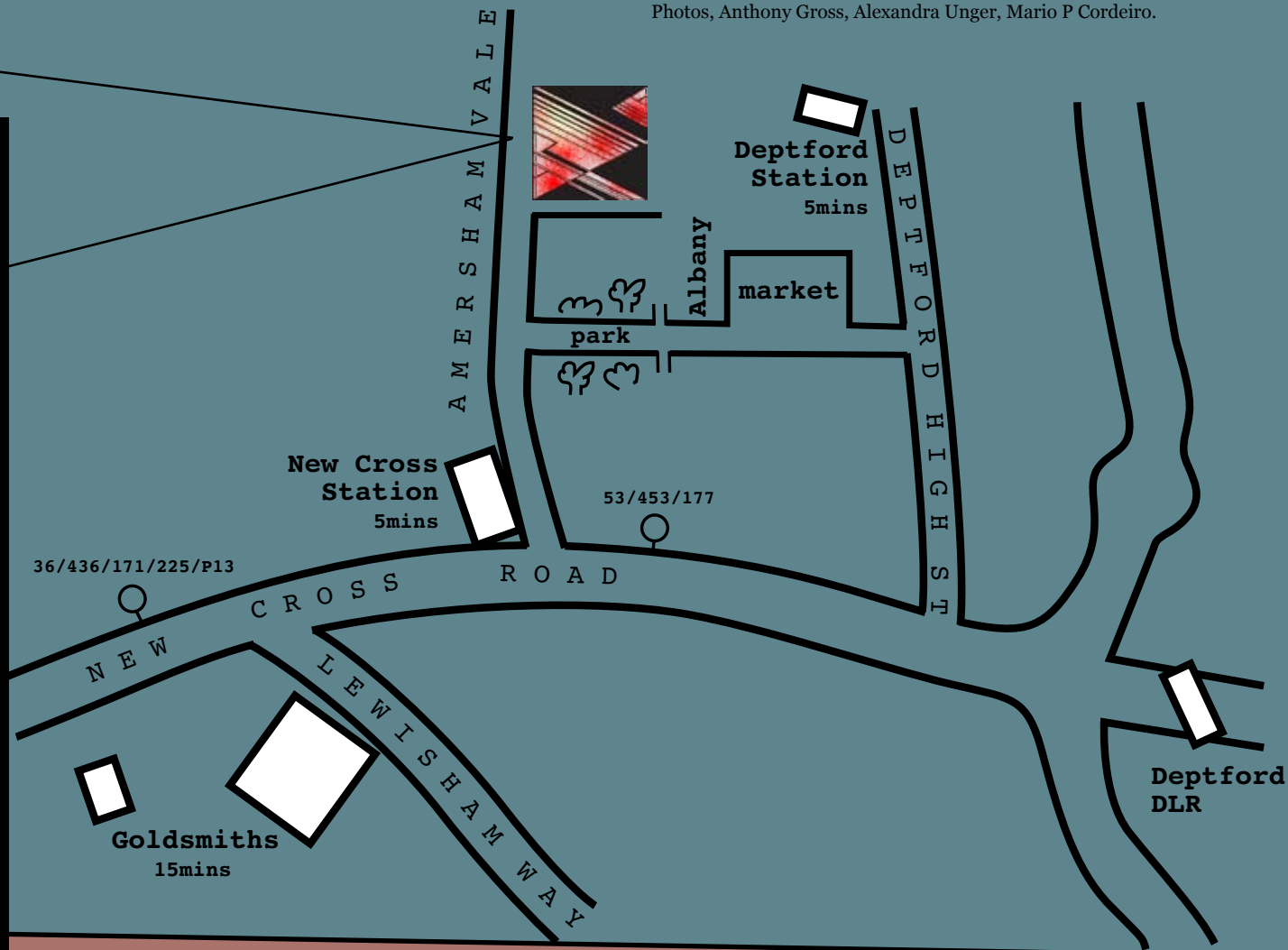
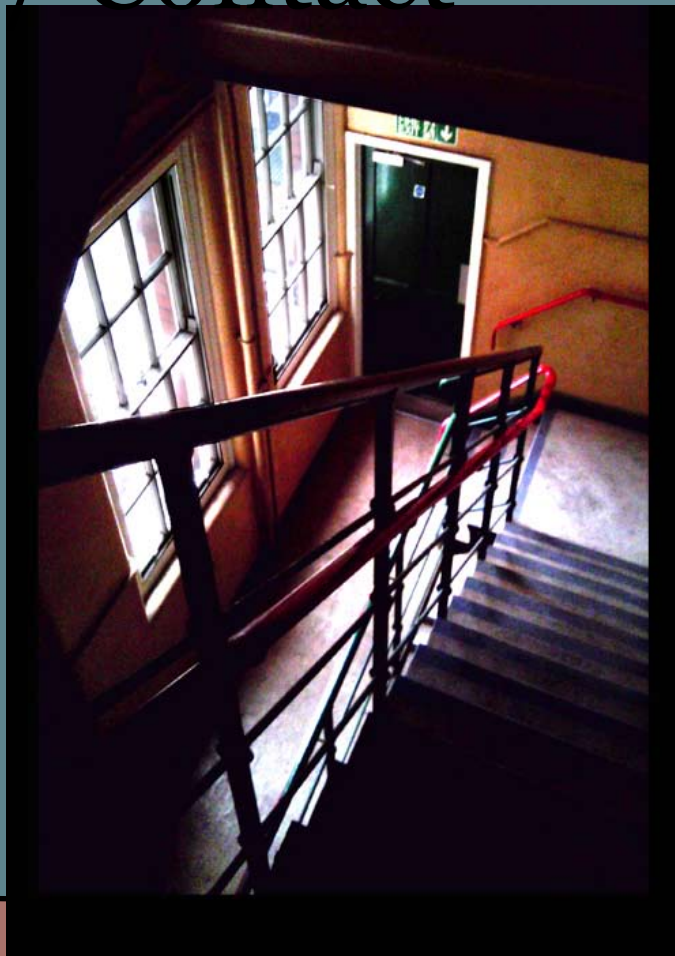
The venue is unlicensed and is used for charity fundraising.

All events need to end at 11pm. Possible public opening hours: 8am-11pm.

For booking info please contact: [studios@tempcontemp.co.uk](mailto:studios@tempcontemp.co.uk)

For up to date availability and calendar please visit: [www.theoldpolicestation.org](http://www.theoldpolicestation.org) and click 'bookings'.

# // Contact



## The Old Police Station

114 Amersham Vale

London SE14 6LG

[studios@tempcontemp.co.uk](mailto:studios@tempcontemp.co.uk)

[www.theoldpolicestation.org](http://www.theoldpolicestation.org)

Transport: Same street as New Cross Station  
(exit, turn left, 5mins walk), New Cross Gate and  
Deptford Rail (10 mins walk), Deptford DLR  
(15 mins), bus 53, 453, 36, 436, 171, 177

We have assistants working these times  
(please don't call outside of these hours):

Monday	10am - 1pm	Mario
Tuesday	n/a	
Wednesday	10am - 1pm	Mario
Wednesday	10am - 3pm	Lucy
Thursday	n/a	
Friday	10am - 1 pm	Mario
Saturday	12 - 4pm	Lucy

General & Studio Enquiries- Lucy Sames:

email: [lucy@tempcontemp.co.uk](mailto:lucy@tempcontemp.co.uk)

tel: 07758789618

Exhibition Enquiries- Mario Cordeiro:

email: [mario@tempcontemp.co.uk](mailto:mario@tempcontemp.co.uk)

tel: 07981681842

Director- Anthony Gross:

email: [studios@tempcontemp.co.uk](mailto:studios@tempcontemp.co.uk)

tel: 07971292817